

WINTER SAFETY GEAR

Cold weather work gear from Broner!

FALL / WINTER 2023



MAKING A DIFFERENCE IN YOUR SAFETY PROGRAM!

Trust... it's what we've worked hard to build with our customers since 1933. We're committed to partnering with each of you to make your safety team a success and all the workers coming home safely each and every day. How? We live and breath safety... safety regulations, safety manufacturer relationships, product knowledge, training, recommendations, and more. In addition, our partnership with AD Safety Network brings best practices for in-stock inventory selection and availability along with access to Safeopedia, the ultimate resource for safety professionals. Making a Difference in your safety program is our goal – flexible and continuously evolving!

Check us out online... where you can shop safety, establish reorder lists, access knowledge and even link to Safeopedia! At Safeopedia.com you'll find free access to safety knowledge, articles, webinars and podcasts and so much more!



PPE Choosing the Right PPE in the Construction Industry

Personal protective equipment (PPE) is a critical component for any safety program, including those designed to protect construction workers. It is an employer's...
By: Nick Warrick | Sales Manager



HAZARDS Using Technology to Protect Employees from Workplace Violence

Violence is an occupational hazard that can affect employees in any field or industry. OSHA defines workplace violence as an act or threat of "physical violence,...
By: Yasmine Mustafa | Co-Founder & CEO



SAFEOPEDIA PODCASTS Safeonomics: Episode 6

In this insightful episode, Scott Cuthbert, CEO and Co-Founder of Safeopedia and Gabe Encarnacion, VP of BBL Safety, sit down with their esteemed guest, Colleen Madsen,...
By: Scott Cuthbert | CEO & Co-Founder



EHS PROGRAMS How to Optimize Warehouse Layout and Design for Safe Operations

In an era where speed and efficiency are paramount, warehouse design and layout play an increasingly significant role. However, while efficiency is a vital aspect of...
By: Alex Selwitz

Add tremendous value
for your business

Small \$\$ investment

**BIG
REWARDS!**

Brand Awareness: Not only on the jobsite or in the plant, your logo will be noticed everywhere it's worn out in public....building awareness and logo recall for your identity.

Creates Trust: Identifying your brand and its team members' improves credibility from the public, and creates pride and responsibility among the employees.

Unified Look: Your company will be represented in the manner you want it to be, both in image and brand advertising.

Team Environment: Branded apparel helps to build interaction, collaboration and a sense of community knowing they're representing your company.

There are many choices in clothing, accessories and PPE that we would like to present, whether its screenprinting, embroidery, laser printing or more....call us today, and we'll get a program started that works for you!



PRICES SUBJECT TO CHANGE WITHOUT NOTICE

BRONER
GLOVE AND SAFETY
Since 1933

NEW!



PIP Bisley GLOBAL SAFETY WORKWEAR **WOMEN'S CLASS 3 SOFT SHELL JACKET**

- Water resistant fabric with breathable membrane
- Built-in fleece lining
- Ventilation under arms for breathability
- Two waist pockets with waterproof zippers
- Chest pocket
- Sleeve cuff adjusters reduces water entering over wrist
- 2" Reflective tape

49-6059 Women's Class 3 Soft Shell Jacket \$52.95 EA.
Specify Sizes S-4XL

NEW!



PIP Bisley GLOBAL SAFETY WORKWEAR **TYPE R CLASS 3 SOFT SHELL JACKET**

- Water resistant fabric with breathable membrane
- 8.85 oz. Polyester fabric
- Zipper closure
- Two waist pockets with zipper closure
- Chest pocket with waterproof zipper
- 2" Segmented reflective tape
- 50+ UPF sun protection

49-6979 Type R Class 3 Soft Shell Jacket \$70.95 EA.
Specify Sizes S-4XL

RL
REMOVABLE
LINER



RADIANS 3-IN-1 RIPSTOP BOMBER JACKET

- 3-IN-1 RIPSTOP BOMBER PU Coated Oxford Ripstop Polyester
- Removable Stowable Hood
- Storm Flap with Snaps
- Removable Inner Fleece Jacket
- Pockets: Hidden Tablet Pocket, 1 Split Pencil, 2 Lower Front, 1 Chest Radio, 1 Clear Badge Pocket
- D-Ring Pass Through in Back of Jacket
- Liner Has 2 Lower Pockets
- Wrist Cuffs with Closure
- Dual Mic Tabs
- ANSI Type R Class 3

49-320 3-In-1 Ripstop Bomber Jacket \$78.95 EA.
Specify Sizes S-5XL

RL
REMOVABLE
LINER



PIP GLOBAL SAFETY PREMIUM RIPSTOP BOMBER JACKET

- Durable Rip Stop polyester 300 D. coated waterproof outer shell with taped seams
- Double front storm flap zipper closure
- Removable black 280g fleece liner
- Water tight "D" ring access
- I.D. pocket and radio/cell pocket
- Mic tabs with reinforced stitching
- Inner liner pockets for keeping items out of the elements
- Detachable hideaway hood
- Adjustable elastic cuffs and elastic waist
- Pen pockets on the sleeve

49-1770 Premium Ripstop Jacket
Specify Sizes S-5XL

\$88.15 EA.



Soft, lightweight
fleece lining



PIP GLOBAL SAFETY RIPSTOP SOFTSHELL FLEECE LINED JACKET

- Tri-laminate ripstop polyester shell with an inner polyester grid fleece lining and TPU (Thermoplastic polyurethane) membrane
- Extremely water resistant, windproof and breathable
- Grid fleece lining reduces fabric weight while increasing warmth
- Removable fleece lined adjustable hood with zipper attachment
- Two outside chest pockets and two lower hand warmer pockets with waterproof zippers
- Three large inside lower pockets including a computer tablet pocket
- 2" segmented reflective material

49-1550 Ripstop Softshell Jacket
Specify Sizes S-5XL

\$73.80 EA.

RL
REMOVABLE
LINER



PIP GLOBAL SAFETY BLACK BOTTOM BOMBER JACKET

- Durable waterproof polyester outer shell with taped seams
- Black trim helps conceal dirt
- Removable black fleece liner
- Black knit waist band and cuff
- 2 mic tabs, 5 pockets with radio, 2 pen pockets
- 2" silver reflective tape
- Detachable hideaway hood

49-1766 Black Bottom Bomber \$62.75 EA.
Specify Sizes S-6XL



PIP GLOBAL SAFETY TWO-TONE BOMBER JACKET

- Durable waterproof 300 D. polyester shell with taped seams
- Built-in quilted high loft polyfil insulation
- 2" two-tone reflective tape for optimum visibility
- Black bottom, collar and cuffs help hide dirt
- Zipper closure with inner storm flap
- Detachable hideaway hood
- 2 external slash pockets and 1 upper chest radio pocket
- 2 mic tabs
- 2 pen pockets on the sleeve

49-1745 Specify Sizes S-5XL \$48.40 EA.



TINGLEY BOMBER II JACKET

- 100% waterproof
- Quilted polyester lining
- Hi-vis 210 denier polyester shell
- 2" reflective tape for 360° nighttime conspicuity
- ANSI/ISEA 107 Class 3 compliant

49-112 Bomber II Jacket M-L
Sizes XL-5XL

\$42.90 EA.
\$45.40 EA.



PIP GLOBAL SAFETY BLACK BOTTOM SWEATSHIRTS

- ANSI/ISEA 107 Class 3
- Water repellent shell treatment
- Pockets: 1 left zippered chest pocket
- 2" Silver reflective tape
- Black bottom and cuffs to help hide dirt
- 10 oz. Polyester fleece
- Front hand warmer pockets

49-1350 Pullover Hoodie \$47.25 EA.

49-1370 Zip Up Hoodie \$48.20 EA.

Specify Sizes S-5XL



PIP GLOBAL SAFETY 3-IN-1 TWO-TONE RIPSTOP JACKETS

- Two tone jacket with removable grid fleece liner is ideal for roadway construction workers, survey crews, utility workers, railway and metro workers and anywhere high visibility is needed.
- Black jacket is ANSI 107 Type O Class 1
- Lime jacket is ANSI 107 Type R Class 3
- 150 D. Rip Stop PU Coated Waterproof Shell
- Adjustable Waist with Drop Tail
- Storm Flap with Zipper Closure
- Black Grid Fleece Removable Inner Liner with 3 Pockets
- ID, Zippered Tablet, Radio/Cell and Zippered Side Pockets
- Removable Adjustable Hood
- Adjustable Waist and Elastic Cuff
- Mic Tabs

49-1772B Black Jacket is ANSI Type O Class 1 \$71.60 EA.
Specify Sizes S-5XL

49-1772L Lime Jacket is ANSI Type R Class 3 \$76.60 EA.
Specify Sizes S-5XL



ergodyne WORK GEAR BASE LAYER TOPS AND PANTS

- Base Layers - Choose between Lightweight and Mediumweight
- Breathable Performance Fit
- No Bulk Layering
- Elastic Waistband on Pants
- All Day Freshness
- No Chafing or Irritation
- Machine Washable
- Full Range of Motion

BASE LAYER TOPS

49-6436 Lightweight Top \$39.95 EA.

49-643 Mediumweight Top \$44.10 EA.
Sizes M-3XL

BASE LAYER PANTS

49-6481 Lightweight Pants \$28.15 EA.

49-648 Mediumweight Pants \$31.75 EA.
Sizes M-3XL



BOSS THERM HEATED BASELAYER VEST

- Designed to be worn as a baselayer over a shirt, or any thermal garment
- Lightweight, active fit one size fits all includes durable two-way locking velcro straps
- Heating elements located on the chest and back, warming a large surface area to promote blood circulation, relief from muscle pain, enhance metabolism and improve immunity
- Low (90° F), Medium (115° F), High (135° F) temperature ranges
- Quick rechargeable 5V power bank provides 8+ hours of warmth on a single charge
- Machine washable; Heating elements are designed to endure 50+ washing cycles
- Includes battery operated remote control and initial battery

49-HV100 Therm Heated Baselayer Vest \$116.65 EA.
One size fits most



MASTER GEAR 3 PIECE HI-VIS RAINSUIT

- 3 piece rainsuit is made from PolyOxford material
- Treated with a polyurethane coating, providing maximum visibility
- High-visibility lime green Jacket has 2" reflective stripes on arms and torso. 5 Snap front closures, 2 flapped front pockets with snap closures to secure valuables. Corduroy collar for comfort.
- Removable lime green hood has four snaps and chin strap for secure fit.
- Overalls have 2" reflective strips. Adjustable elastic suspenders with quick release buckles.
- Single Snap fly
- ANSI Class 3

95-403 3-Piece Hi-Vis, Rainsuit \$42.30 EA.
Specify Sizes M-6XL



RW07 RAINWEAR

- Industrial grade high visibility PVC rainsuit
- Polyester interior adds dependable protection
- .35mm PVC/PolyHigh Visibility Material
- Double Heat-Welded Construction for Strength and durability in rugged conditions
- Jacket Vented Cape Back for Comfort
- Hook & Loop Adjustable Cuffs
- Detachable hood included with jacket
- Bib style overall with adjustable suspenders and fly front
- ANSI/ISEA 107-2015 Class E Protection
- Self Extinguishing PVC material SE D6413 Tested

49-107J RW07 Jacket - M-XL \$51.95 EA.
2XL-5XL \$53.95 EA.

49-107B RW07 Overalls - M-XL \$30.95 EA.
2XL-5XL \$32.95 EA.



WATERPROOF PANTS



- ANSI 107 Class E Value Black Trim Over Pants are ideal for construction, municipalities, ship yards, and anywhere hi-visibility apparel is necessary.
- Waterproof polyester with taped seams
- 2" silver reflective tape
- Black trim to help hide dirt
- 2 side access pockets with storm flap
- Adjustable 2 position snap cuff with large leg opening
- Elastic waist for comfort fit

49-1757 Waterproof Overpants \$27.45 EA.
Specify Sizes M - 5XL



FALCON™ VIZ 48" RAINCOAT

- Hi-Viz Ansi Type R Class 3 Value All Purpose 48" Raincoat
- Lightweight polyester with waterproof PU coating and taped seams
- Zipper closure with storm flap with snaps
- Side access pockets
- Concealable hood for extra protection
- Badge holder

49-1048 Falcon™ Viz Raincoat \$40.50 EA.
Specify Sizes S-5XL





49-1200



49-1202

PIP
GLOBAL SAFETY

FALCON™ VIZ RIPSTOP RAINSUIT

Protection from the elements with ANSI 107 Compliance for high visibility. Lightweight (150 denier fabric) waterproof design, Falcon Viz helps workers be seen and stay dry in inclement conditions.

JACKET

- Waterproof breathable lightweight 150 D. ripstop outer shell with PU coating
- Black bottom and cuffs to help hide dirt
- Extends below the waist
- Adjustable, hideaway hood for extra protection
- 2 lower pockets and 1 inside upper chest pocket
- Mic tabs

PANTS

- Black bottom with snap adjustments and zippered gusset for easy on and off
- Removable suspenders
- Pass through pockets with front opening
- Elastic waist with drawstring

49-1200 Ripstop Rain Jacket \$46.40 EA.
Sizes S/M, L/XL, 2XL/3XL, 4XL/5XL

49-1202 Ripstop Rain Pants \$32.70 EA.
Sizes S/M, L/XL, 2XL/3XL, 4XL/5XL

BRONER
GLOVE AND SAFETY
Since 1933

800.521.1318 • FAX: 800.276.6372

10
HOURS
FULL POWER

800.521.1318



32-1100D



**Won't Quit Half Way
Through The Work Day**

24
HOURS
FULL POWER



32-1101D

6
HOURS
FULL POWER



32-1106D



HEAT PAX HAND, BODY, FOOT and TOE WARMERS

- Hours of air activated warmth and relief from cold weather. Once the package is opened, an exothermic reaction begins providing an effective defense against the winter cold
- 3 easy steps to activate – Remove from the package, shake, and place in designated area on the body
- Single use so it can be disposed of after your day of work
- Safe, odorless and ultra thin for comfortable use

32-1100D Hand Warmers \$30.80 BX.
5 pair per pack / 8 packs per box
30% warmer than leading brands after 10 hours

32-1101D Body Warmers \$53.20 BX.
5 each per pack / 8 packs per box
10% warmer in first 4 hours than leading brands

32-1106D Toe Warmers \$46.00 BX.
5 pair per pack / 8 packs per box
25% warmer in the first 2 hours than leading brands



98-0150



98-0250



98-0350



98-0650



ORIGINAL MID-SOLE ICE CLEATS

The K1 Series Mid-Sole is designed to fit a variety of footwear for a convenient solution that keeps each member of the team safe no matter the work environment, shoe size or footwear requirements. The K1 Series Mid-Sole Ice Cleats can be easily rotated to the top of the foot when transitioning indoors, driving or climbing a ladder. No need to take them off to go inside. With slim, low, mid and high profiles available and a Hi-Vis adjustable strap, the K1 Series Mid-Sole fits any safety footwear at the midsole to allow much-needed traction.

- Designed for flat-soled shoes like sneakers and safety shoes
- Industrial quality built for the job
- One Size fits all - adjusts to fit a variety of styles and sizes of footwear
- Durable and effective ice-penetrating tungsten carbide studs
- Hi-Vis Adjustable straps in orange
- Compact poly-bag packaging is ideal for on-site vending machines and efficient distribution to the entire team

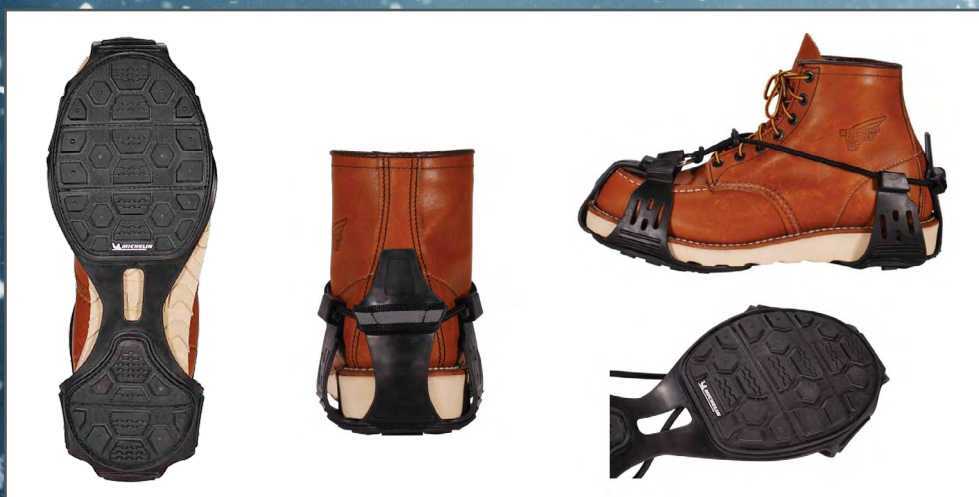
98-0150 Original Ice Cleat \$27.75 PR.

98-0250 Ice Cleat Low Profile \$27.75 PR.

98-0350 Ice Cleat High Profile \$27.75 PR.

98-0650 Ice Cleat Slim \$29.85 PR.

800.521.1318



TRES 6325 SPIKELESS TRACTION DEVICE

SPIKELESS
TRACTION DEVICE

- Spikeless traction - reduces risk of slips and injuries without scratching surfaces
- Outdoor and indoor use - easily transition from outdoors to indoors without removing
- Michelin® technology - strategic grooves, micro-pumps and block siping for optimal traction on water, ice or snow
- One-piece stretch design - hugs the toe and heel of shoes or boots
- Adjustable design - adjustable cord cinches tight for secure fit
- Heel tab with reflective accent - for easy on/off and enhanced visibility
- Flexible in extreme temps - tested to remain flexible in temps as low as -40°F (-40°C)
- Multiple sizes - M (5-8 us mens), L (8-11 us mens) and XL (11-14 us mens)

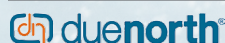
98-6325 Sizes M, L, XL \$37.00 PR.



TRES 6300 ONE PIECE ICE CLEATS

- 8 Rugged, heat-treated carbon steel studs for grip
- Stretchable rubber for fit and easy on/off
- Flexible to -40°F
- Med. shoe size 5-8, Lrg shoe size 8-11, XLrg 11-15

98-630 Sizes M-XL \$14.35 PR.



ALL PURPOSE TRACTION AID

- Enhanced rubber compound provides added traction and secure fit while retaining elasticity in subzero temperatures
- Geometrically designed top webbing and improved shape provides a more comfortable and secure fit on a greater variety of footwear
- Knurled, textured lining and wide, thick heel strap grips footwear better and helps keep traction aids in place for longer wear and optimal performance
- 6 Tungsten Carbide Due North® Ice Diamond™ Spikes, along with the bi-directional tread, provides powerful traction with maximum grip

98-270 All Purpose Traction Aid

Specify sizes S-L
Size XL

\$26.95 PR.

\$31.95 PR.



GRIP PRO SPIKELESS TRACTION AID

- Designed for workers who require extra traction and are frequently transitioning from outdoor to indoor surfaces
- 22 patented hi-vis chevrons per pair are strategically placed to increase grip and reduce the risk of slips and falls
- Specially designed treads channel water away to deliver enhanced traction on wet and icy surfaces
- Natural rubber material with a proprietary polymer blend
- Flexibility up to -65°F
- Slip-on design fits snugly over boots and shoes
- Easy on-off pull tab provides quick adjustment

98-570 Spikeless Traction Aid \$35.95 PR.

Specify Size S/M, L/XL



ICE TREKKER DIAMOND GRIP

- Durable traction cleats fit over shoes and boots to provide superior traction on snow and ice on all surfaces
- Patented Diamond Beads are made from case-hardened steel alloy strung on steel aircraft cable; hundreds of biting edges grip in all directions
- Natural rubber sling remains elastic and secure even in sub-zero temperatures; easy to put on and take off, comfortable for prolonged use
- Beads swivel independently, preventing buildup of snow and ice making them ideal for transitioning between surfaces like gravel, dirt, and concrete

98-600 Spikeless Traction Aid \$54.99 PR.

Specify Size S/M, L/XL

See many
more boots
at bronersafety.com



BADGER INSULATED 17" KNEE BOOT

The Badger works as hard as you to get the job done... no matter the conditions.

- 17" height - Insulated - Plain Toe
- Fleece-lined, 5mm neoprene and an EVA midsole insulate your feet from the cold air and ground
- 100% liquidproof for all weather protection
- Durable rubber outsole is abrasion resistant for long life and will remain flexible in cold temperatures
- Cushioned footbed absorbs shocks and a wider calf area for relaxed fit provides all day comfort
- Deep lug cleats in a unique tread pattern provides traction in snow, slush and mud
- Pull tabs for easy donning and a heel kick for simple, hands free removal
- Removable insole helps wick moisture to keep feet warm and dry

98-151 Sizes 4-14 \$159.15 PR.



PRICES SUBJECT TO CHANGE WITHOUT NOTICE

SHIPS
DIRECT
from factory



ORION™ WINTER OVERSHOES

Orion™ combines a sturdy nylon upper with a lightweight polyurethane midsole and a durable TPR outsole to create a lightweight, anti-fatigue overshoe for all day comfort and heavy-duty performance.

- 840 denier nylon with polyurethane coating is waterproof and durable
- Roomy interior design and extra wide gusset to accommodate oversized work boots.
- Hook and loop closure allows for customizable fit
- Adjustable instep strap with quick-release buckle for ease of use while wearing gloves.
- Deep lug, cleated outsole provides sure-footed traction in wintry conditions
- Polypropylene foam liner provides cushioning and insulation
- 14" standard height with a 6" roll-a-way gaiter expands coverage to 20"
- Fits Men's Work Boots: Small fits shoe sizes 4 - 5.5, Medium 6 - 7.5, Large 8 - 9.5, XL 10 - 12, 2XL 13 - 15.

98-750 Sizes S-2XL \$122.65 PR.

Superior Grip
in dry, wet and
oily conditions



**Excellent
Dexterity**



PIP
GLOBAL SAFETY

G-TEK® POLYKOR INSULATED CUT RESISTANT

- Lightweight PolyKor® blended shell provides excellent dexterity
- Double-dipped nitrile foam grip on full hand
- Acrylic lining provides economical cold weather protection
- Nitrile foam coating provides superior grip in dry, wet and oily applications
- Fully coated flat nitrile helps keep hands dry in wet applications
- ANSI Cut Level 4



31-780 G-Tek® PolyKor Insulated
Specify Sizes M-2XL

\$8.05 PR.



**Amazing
Warmth**



PIP
GLOBAL SAFETY

Outstanding wet and dry handling

TOWA POWERGRAB THERMODEX

- 13-gauge seamless liner has a lighter and tighter knit design, ensuring superior dexterity and minimum hand fatigue
- Fine napped nylon/polyester construction provides amazing warmth and unmatched feel
- Water repellent liner is engineered to repel water to keep your hands dry under wet conditions like rain and snow, while allowing hands to breathe
- Latex MicroFinish® coating provides a superior grip in dry and wet conditions by reacting like tiny suction cups that attach themselves firmly to the material being handled
- Extra coating in the thumb area for added safety
- ANSI Cut Level A2



31-328 PowerGrab® Thermodex
Specify Sizes S-2XL

\$6.95 PR.



RADIANS



RWG17 WINTER 3/4 LATEX COATED

- 2 ply, water resistant, 13 gauge orange hi-vis nylon outer shell
- 3/4 dipped micro finished black coating
- 7 gauge acrylic terry liner
- Seamless elastic slip-on cuff
- EN388 level 3 protection against abrasion

31-17 Winter 3/4 Latex Coated
Specify Sizes M-2XL

\$7.15 PR.



CORDOVA
SAFETY PRODUCTS



COLD SNAP FLEX

- Features a two-ply thermal shell:
- A 13-gauge red nylon outer shell and Black Foam PVC coating for great flexibility in sub-zero temps
- Palm coating provides excellent wet and dry grip
- Brushed acrylic inner lining for warmth
- Quick-drying and lightweight for all day comfort
- ANSI Cut Level: A3

31-901 Cold Snap Flex
Specify Sizes M-2XL

\$6.95 PR.



RADIANS



WINTER GRIPPER

- Cold Weather Gripper features:
- 7 gauge high visibility yellow polyester shell with a blue crinkle latex coating
 - 80% acrylic, 20% polyester inner liner for extra protection and warmth
 - ANSI Cut Level: A3

31-27 Winter Gripper
Specify Sizes M-2XL

\$4.45 PR.

Keeps hands warm
in temperatures
down to -22°F / -30°C

NEW!



INSULATED DOUBLE DIPPED LATEX GLOVE

- Sandy latex coating on palm and fingers provides an effective grip in dry and oily situations
- Smooth latex full dipped coating keeps hands dry in wet applications
- 13 gauge outer HPPE cut-resistant liner provides comfort and dexterity
- 10 gauge inner acrylic liner provides insulation and moisture resistance
- Contact cold protection down to as low as -22°F / -30°C
- Knit cuff creates a snug fit to keep out debris
- ANSI Cut Level: A4

31-507 Insulated Double Dipped Latex Glove \$8.50 PR.
Specify Sizes S-2XL



Keeps hands warm
in temperatures
down to -10°C / 14°F

Strong, steady grip
in handling lightly oiled parts



TENACTIV™ WATERPOOF INSULATED CUT GLOVE

- TenActiv™ 18-gauge knit combines dexterity and comfort with ANSI Level A4 cut protection
- Unbeatable protection from harsh elements due to exclusive breathable waterproof and windproof membrane
- Unique membrane lamination stops layers from slipping, providing added dexterity while ensuring gloves won't turn inside out when taken off
- Acrylic terry liner provides warmth and comfort in temperatures down to -10°C / 14°F
- ANSI Level 3 abrasion resistant and ANSI Level 4 puncture resistant
- Foam nitrile palm coatings provide a strong, steady grip when handling lightly oiled parts

31-184 Tenactive™ Waterproof Insulated Cut Glove \$22.15 PR.
Specify Sizes S-3XL



**Abrasion &
Puncture
Resistant**

Remains soft
in temperatures as low as -58°F



NINJA ICE

- These gloves offer the greatest assortment of dexterity, sense of touch, and protection
- 15 gauge black nylon shell with a 7 gauge acrylic terry liner
- Black HPT coated palm and fingertips repels liquids while providing strong wet or dry grip
- Coating remains soft in temperatures as low as -58°F
- ANSI Cut Level: A3

31-969 Ninja® Ice Palm Coated \$6.40 PR.
31-970 Ninja® Ice Fully Coated \$7.05 PR.
Specify Sizes S-2XL



Acrylic terry liner



Strong
Wet and Dry Grip

31-970
Fully coated

31-969
Palm coated

BRONER
GLOVE AND SAFETY
Since 1933

800.521.1318 • FAX: 800.276.6372



N-FERNO 6980 WINTER HAND WARMER

Wear around the waist to provide instant warming relief when working in the elements, particularly extreme temperature conditions where fine hand dexterity work prevents use of warm gloves.

- Durable nylon shell – windproof and water resistant
- Warm lining – 100% polyester fleece
- Neoprene cuffs – keep heat in and cold out
- Angled muff design – increases functionality and makes for a natural fit
- Quick-release waistband – adjusts to fit with or without bulky winter gear
- Swivel mechanism – enables wearer to loosen and spin muff when not in use
- Warming pack pockets – two interior pockets for hand warming packets
- Front zippered compartment – storage for personal items or small gear (cell phone, screwdriver, nails, pens, etc.)
- D-ring attachment – for linking glove clips and other small tetherable gear

32-6980 Hand Warmer \$27.30 EA.



PIP
GLOBAL SAFETY

31-756

31-755

ANSI
A2

POWERGRAB® THERMO MICROFINISH

- Acrylic gloves provide economical cold weather protection
- Latex MicroFinish coating provides a superior grip in dry and wet conditions by reacting like tiny suction cups that attach themselves firmly to the material being handled
- Hi-Vis coloring makes this product very easy to see
- Excellent thermal insulation
- Quickly evaporates moisture from the skin
- Extra softness for non-chafing comfort
- ANSI Cut Level A2

31-755 Power Grab Thermo Lime \$8.50 PR.
31-756 Power Grab Thermo Orange \$8.95 PR.
Sizes M-2XL

800.521.1318



ProFlex®

7501 WATERPROOF WINTER GLOVE

- Thermal Protection – 15g polyester with a soft 10g brushed acrylic fleece liner for comfort and warmth
- Waterproof – Fully coated latex
- Superior Grip – Sandy, nitrile-dipped palm
- Dexterity – Dual Layer Of Latex And Nitrile
- Tested & Approved – Meets EN 388: 2131X
- Machine Washable

31-7501 ProFlex® 7501 \$6.75 PR.
Specify Sizes S-2XL



COLD SNAP FOAM LATEX PALM

- Natural rubber latex gloves
- Exceptional gripping power and outstanding protection against punctures and abrasion
- Thermal, 7-Gauge, machine-knit high visibility terry shell
- Brushed Acrylic/Polyester Interior
- Black Foam Latex Palm Coating
- Form-fitting, flexible, and comfortable

31-399 Specify Sizes S-XL \$3.65 PR.



ATLAS THERMAFIT



ANSI
A2

- Most popular cold weather glove
- Acrylic loop-in terry cotton liner for warmth, lightweight feel and suppleness
- Natural rubber coating on the palm and fingertips benefits abrasion, cut, puncture and tear
- Rough texture provides firm grip
- Durable and comfortable

31-750 Specify Sizes S-XL \$3.10 PR.



Find more glove solutions
at bronersafety.com



FLEX-RITE ICE™

- Features a cold-resistant formulation, red flexible PVC
- Seamless BOA acrylic machine-knit thermal lining
- Excellent resistance to most acids, oils, animal fats, caustics, petroleum hydrocarbons, and alcohols
- 12-inch length

30-325 Specify Sizes L-XL \$9.10 PR.



TOP GRAIN GOATSKIN INSULATED DRIVER

- Soft, abrasion resistant top grain goatskin leather
- White cotton lining provides insulation
- Features slip-on styling to provide good fit and comfort
- Keystone thumb is ergonomic, reduces hand fatigue
- Elastic closure sewn inside glove for safety and comfort
- Meets the content requirements for Chromium VI free leather



21-3600 Specify Sizes M-XL \$6.50 PR.



THERMASTAT GLOVE LINERS

Thermostat gloves help keep moisture away from the hands, keeping hands warm, dry and comfortable.

- 13 gauge hollow-core, hydrophobic polyester fiber traps heat to keep hands warm
- Gloves wick perspiration away from the skin for added warmth and comfort
- Ambidextrous pattern permits glove to be worn on either hand, extending wear and reducing costs
- Ideal for use as a liner or on their own

47-4597 Thermostat Liner \$31.80 DZ.



NEW!



superiorglove®

ENDURA FLEECE LINED COWHIDE DRIVERS GLOVE

- Close-fitting, hard-wearing winter drivers gloves for durability & dexterity
- Grain cowhide protects against abrasion while repelling water & conforming to hands over time
- Backs are elasticized for a snug fit
- Keystone thumb maximizes durability and dexterity
- Fully fleece lined for excellent winter protection

21-378AFL Specify Sizes S-XL \$6.55 PR.



THERMAL PIGSKIN DRIVERS GLOVE

- Hi-Vis coloring on the finger tips and "WATCH YOUR HANDS" on the back makes this product very easy to see
- Keystone thumb is ergonomic, reduces hand fatigue, offers superior dexterity and durability
- Black thermal lining provides excellent insulation without the bulk of fleece
- Top Grain leather is smooth, provides durability and dexterity
- Drivers gloves feature slip-on styling to provide good fit and comfort
- Elastic closure sewn inside glove for safety and comfort

21-994 Specify Sizes S-2XL \$9.25 PR.



50-217



50-219

RADIANS® DUAL LAYER THERMAL HARD HAT LINERS

Nordic Blaze® warming hard hat liners

- Protection for head and neck from cold harsh elements
- Ergonomically designed
- Hook and loop closure easily attaches to internal hard hat system
- Quilted outer layer blocks out chilly weather
- Nordic fleece thermal layer keeps in heat

50-217 Shoulder Length Liner \$9.65 EA.

50-219 Hard Hat Liner \$7.95 EA.



61-516

61-510



61-163

61-161

61-162

ACRYLIC KNIT CUFF CAPS

- Fine gauge acrylic knit cuff caps
- Choose from several colors
- Available in double layered knit or double layer with Thinsulate™ Insulation
- One size fits most

SOLD BY ONE DOZEN PER COLOR

61-161 Black \$34.80 DZ.

61-162 Copper \$34.80 DZ.

61-163 Charcoal \$34.80 DZ.

61-510 Hi-Vis. Yellow \$34.80 DZ.

61-516 Hi-Vis. Orange \$34.80 DZ.



THINSULATE® LINED

61-192 Hi-Vis. Yellow \$51.00 DZ.

61-193 Hi-Vis. Orange \$51.00 DZ.



SHERPA LINED

Classic shoulder-length cotton twill hard hat liner.

- Sherpa lined for maximum warmth and comfort
- Built-in warming pockets lined with DuPont Tyvek®
- Sewn in reflective strip for bonus protection
- 100% Cotton Twill outer shell
- 50% Acrylic / 50% Polyester Sherpa lining

50-550 Sherpa Liner \$11.35 EA.



N-FERNO® 6882 2-LAYER FR LINER

Shoulder-length 2-layer Modacrylic blend twill shell

- Modacrylic fleece lining
- Elastic gather at forehead to keep out the cold
- Hook and loop straps for easy hard hat attachment
- Warming pack pockets at ears
- Meets ASTM F1506 requirements
- Arc-rated; ATPV rating of 20 cal/cm²

50-6882 2-Layer FR Liner \$38.55 EA.



N-FERNO® 6847 FR GRID BALACLAVA

FR Dual Hazard Grid Balaclava Face Mask

- Power Grid fleece for enhanced thermal capabilities while lightweight and breathable
- Moisture wicking technology
- Meets requirements of ASTM F1506, classified to both NFPA 70E and NFPA 2112
- APTV 20 cal/cm²
- PPE Cat 2

50-6847 FR Grid Balaclava \$55.60 EA.

**DUAL LAYER
COMFORT**



PIP
GLOBAL SAFETY

THERMAL EXO DUAL LAYER BALACLAVA

- Form-fitting balaclava provides dual layer comfort
- Harnesses heat from the sun's powerful solar rays to create an exothermic warming effect, intensifying the warming effect of the material up to 15° F
- Protection from extreme weather conditions sealing out the cold, wind, & snow
- Soft, breathable mesh inner layer, Nylon/Spandex outer layer
- Wear both face layers in cold climates or just the mesh when warmer
- Wear as a ski mask, neck gaiter or a full-face mask
- Lightweight fabric fits comfortably under a hard hat or helmet
- Full thermal head and neck coverage, easily tucks into jackets

50-1195 Balaclava \$14.25 EA.



50-6821-L



50-6821-O



50-6821



N-FERNO® FLEECE BALACLAVA

- High-quality thermal fleece – warmth in mild to extreme conditions
- Stretchable material – flexible to fit most head sizes
- Long length – full thermal head/neck coverage that tucks into jackets
- Comfortable & non-bulky – fits comfortably under a hard hat or helmet
- Reflective accent – Helps keep wearers seen and safe

50-6821	Black Balaclava	\$6.65 EA.
50-6821-L	Lime Balaclava	\$6.65 EA.
50-6821-O	Orange Balaclava	\$6.65 EA.

**UPF 50+
RATED**



50-260



50-265



FLEECE HINGED BALACLAVA

- Performance fleece for the active worker
- UPF 50+ rated polyester and spandex fabric
- 3 layer breathable mesh for moisture management
- Reflective striping and logo on back
- Can be worn 3 ways with hinged design
- Manages moisture in cold conditions

WEAR 3 WAYS



50-260 Black Balaclava \$13.40 EA.
50-265 Yellow Balaclava \$13.40 EA.



WIND & WATER RESISTANT BALACLAVA

- 300 gm fleece
- Wind and water resistant to protect you against the elements
- 3 layer breathable mesh for moisture management
- Contrasting binding color for easy visibility

50-225 One Size \$17.85 EA.

www.bronersafety.com

800.521.1318 · bronersafety.com

BRONER
GLOVE AND SAFETY
Since 1933


Making A Difference in Your Safety Program.

800.521.1318

ACCOUNT QUICK ORDER \$0.00

Products ▾ Resources ▾ Services Training Company ▾


Search



Cut Protection for any application


Don't see what your looking for? Reach out to your sales rep or call 1(800) 521-1318 and customer service will be happy to assist.

FEATURED ITEMS




Sqwincher Qwik Stik
Sqwincher Qwik Stik

SHOP NOW »



Traverse
Traverse Safety Helmet

SHOP NOW »



G-Tek PolyKor
G-Tek PolyKor Foam Nitrile Palm

SHOP NOW »

Connect to **bronersafety.com**

- Order online - create efficient shopping lists
- Explore our safety products and re-order on-line
- Latest safety newsletters, training links and more

Making A Difference In Your Safety Program!